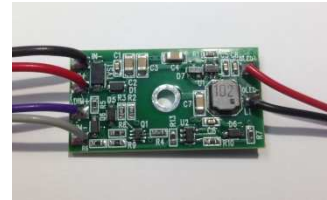


## LD0196 Brite-Amber Driver

### Product Overview:

The LD0196 is a compact 44mA OLED driver module providing true current regulation over a wide input voltage range (10-24VDC). These drivers have 0-10V dimming capability and are ideal choice for powering OLEDWorks Brite Amber OLED panels.



The LD0196 compact form factor and feature set allows for easy integration into OLED lighting products driving single or multiple chains of OLEDs.



### Features:

- Input voltage: 10-24VDC
- Output Voltage: 5.8 - 21.6VDC
- Output Current: 44mA constant current
- 0-10V Dimming (IEC 60929)
- Dimensions (PCBA): 1.5" x 0.800 x 0.134"
- 22AWG Wire Leads
- Reverse Polarity Protection
- Short and Open Circuit Protection
- Spike and Transient Protection

### Applications:

- Wall marker
- Hospital patient rooms and corridors
- Senior Living Centers
- Step lighting
- To enhance natural sleep patterns

### Certifications:

- UL8750, CSA, CE
- EMC: EN55022, EN61000-3-2, -3-3, -4-2, -4-3, -4-5, -4-6

### Part Numbers:

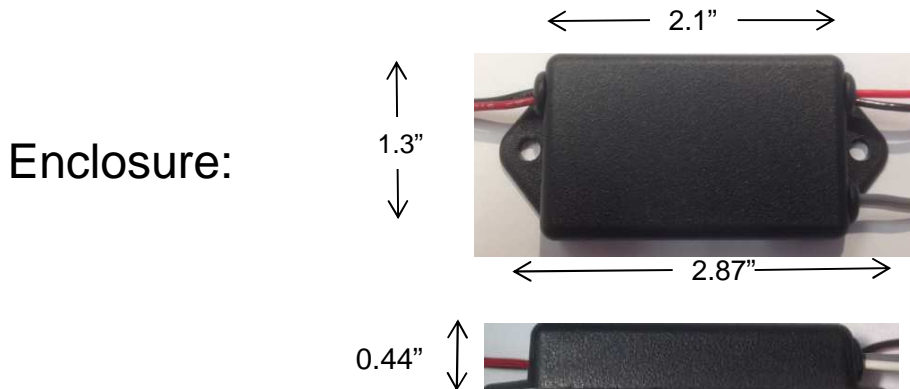
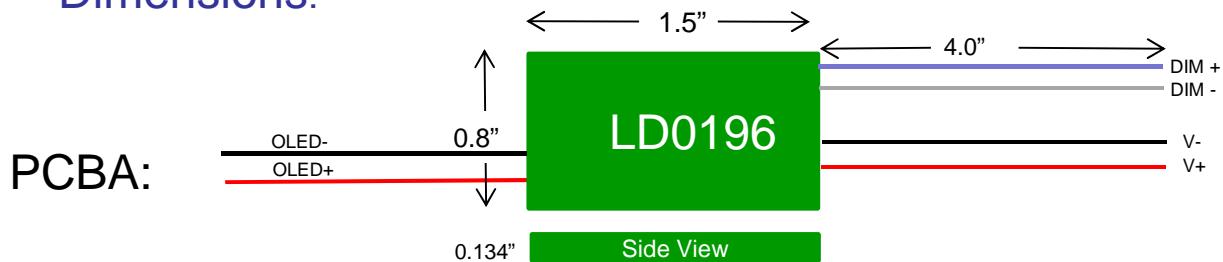
<p><b>LD0196-01</b> Driver PCBA <b>LD0196-02</b> Driver with enclosure</p>
--------------------------------------------------------------------------------

# LD0196 Brite-Amber Driver

## Characteristics:

- Input voltage (Max): 24 VDC
- Input voltage (Min): 10 VDC
- Typical Efficiency: 92% (full load)
- Operating Temperature: -20 to +50C
- Storage Temperature: -40 to +85C

## Dimensions:



## Application Information:

- Input voltage should always be ~ 2 Volts higher than OLED string forward voltage (refer to table below)

Number of LEDs in Series	OLED Voltage (Typ)	Allowable Input Voltage Range (Typ)
1	6.5V	9-24V
2	13V	15-24V
3	19.5V	22-24V

## LD0196 Brite-Amber Driver

### Application Examples:

